

MachMan

Your Solution to Engineering in the Food Industry

Reg No. 2012/005712/07

VAT no. 4960260067

MACHMAN (PTY) LTD
COMPANY PROFILE

1. Introduction

The purpose of the document is to provide an overview of MachMan (Pty) Ltd.

Additional information can be supplied on request depending on further client requirements.

General Organisational Details:

Contact person:	Rudi Solomons
Physical Address:	10 Flamingo Crescent, Lansdowne Cape Town, 7780
Postal Address:	PO Box 2717, Clareinch, 7710
Tel:	(021) 761 1301
E-mail:	rudi@machman.co.za

2. Background

Wesley Puccini and Joel van der Schyff started MachMan in Nov 2011 due to the liquidation of their previous employer. They started operations with very limited resources but an abundance of enthusiasm out of a small 60 sq meter sub-let factory.

Since establishing MachMan in 2011, MachMan has successfully completed numerous projects including large projects for blue chip international companies.

MachMan developed into a stable but vibrant company offering engineering solutions in packaging machine sales, maintenance, turnkey solutions, machine installation and manufacture. Most of our clients are significant players in the food and allied industries.

One of the founding directors, Joel van der Schyff, decided during 2017 to pursue new challenges and sold his stake in MachMan to Theunis de Jong.

The current MachMan team has accumulated years of mechanical and electrical experience. This includes design, manufacturing, fitting and turning, project management, turnkey solutions, factory layouts, installation and commissioning of machines.

The initiation of MachMan is based on honest, individual service. We thrive on realistic challenges and goals. We wish to continue our growth as a reputable company, which our clients trust unconditionally and have confidence in.

IMC Partnership



MachMan is the official sales and service distributors for IMC in South Africa. IMC is an international packaging machine manufacturer with their head office in Tianjin, China. IMC exports machines to 52 different countries around the world and therefore have great pleasure in also offering these quality machines into South Africa.

Support and spares for these machines are handled through an international and local network.

As part of MachMan's short term growth and expansion programme, we are actively pursuing new partnerships and distribution agreements with international machine manufacturers and equipment suppliers.

Awards and Achievements

We were one of the top 4 finalist in the Standard Bank think big competition. We were selected to join the National Gazelles programme in 2016. Only a year later, MachMan became a Top 40 member of this prestigious business entrepreneur growth programme.

3. Company Profile

Our Vision

To find strategic partners to expand the current departments of MachMan.
We envision a key group of managers, managing individual areas and departments to make up an inter-company serving family.
No Problem is ever too big or too small for us. Every problem has a solution

Our Mission

We offer a one-stop shop for our clients, where inside this shop you will find machine design, manufacture and maintenance on all levels from mechanical to electrical all the way to a fully functional preventative maintenance program to service your needs and maintain the strictest quality standards associated with the food industry.

Our Main Aim

We are aiming to be leaders in supplying Engineering Solutions to the Food and Allied Industry.

Our MachHEART values:

- **Honesty** - Build Open AND Honest Relationships with communication.
- **Excellence** - Do More with Less AND be Customer driven.
- **Accountability** - Embrace AND Drive Change.
- **Respect** - Be passionate AND determined.
- **Teamwork** - Build a positive team spirit AND Pursue growth and learning.

Our main services include, but are NOT limited to:

We specialise in semi-automated and automated machinery and are equipped to service the food and allied industries.

Machine Manufacture, Maintenance & Rebuilding

- Filling machines
- Packaging machines
- Bottling systems
- Labelling machines
- Conveyor Lines

Machine Design & Solutions

- Food & Related Industry Machines
- All automated functional machines
- Custom Projects
- Turn Key Solutions
- Factory Layouts

Machine Related Services

- Electrical Panel Building, Programming & Upgrades
- Stainless Steel Components
- Shutdown Maintenance
- Troubleshooting
- 24 Hour Services
- Asset Care

4. Our Expertise

Combined we have decades of years in mechanical and electrical experience, including design, manufacturing, fitting and turning, project management, turnkey solutions, factory layouts, installation and commissioning of machines.

5. Our Directors

Wesley Puccini – Director

Background and experience:

- Electrical trade tested.
- National certificate in electrical engineering.
- Certificates in drawing and design, practical electrical 1, 2, and 3.
- Experience in designing of electrical drawings, assembling and wiring of electrical panels, wiring of buildings, ships, stadiums etc.
- Experience in machine automation.

Theunis de Jong - Director

Background and experience

- Human Resources qualified and experienced in a corporate industrial environment.
- Finance, marketing and business management experience during employment in the corporate environment.
- Self-employed since 1996. Business ventures included hospitality, retail, education, property and engineering.

6. Our MachMan Familia

Each staff member forms a vital part of MachMan. MachMan employs in the region of 15 full-time team members. We are also involved in training of apprentices as we strongly believe in upskilling and knowledge sharing of the future generations in the engineering industry.

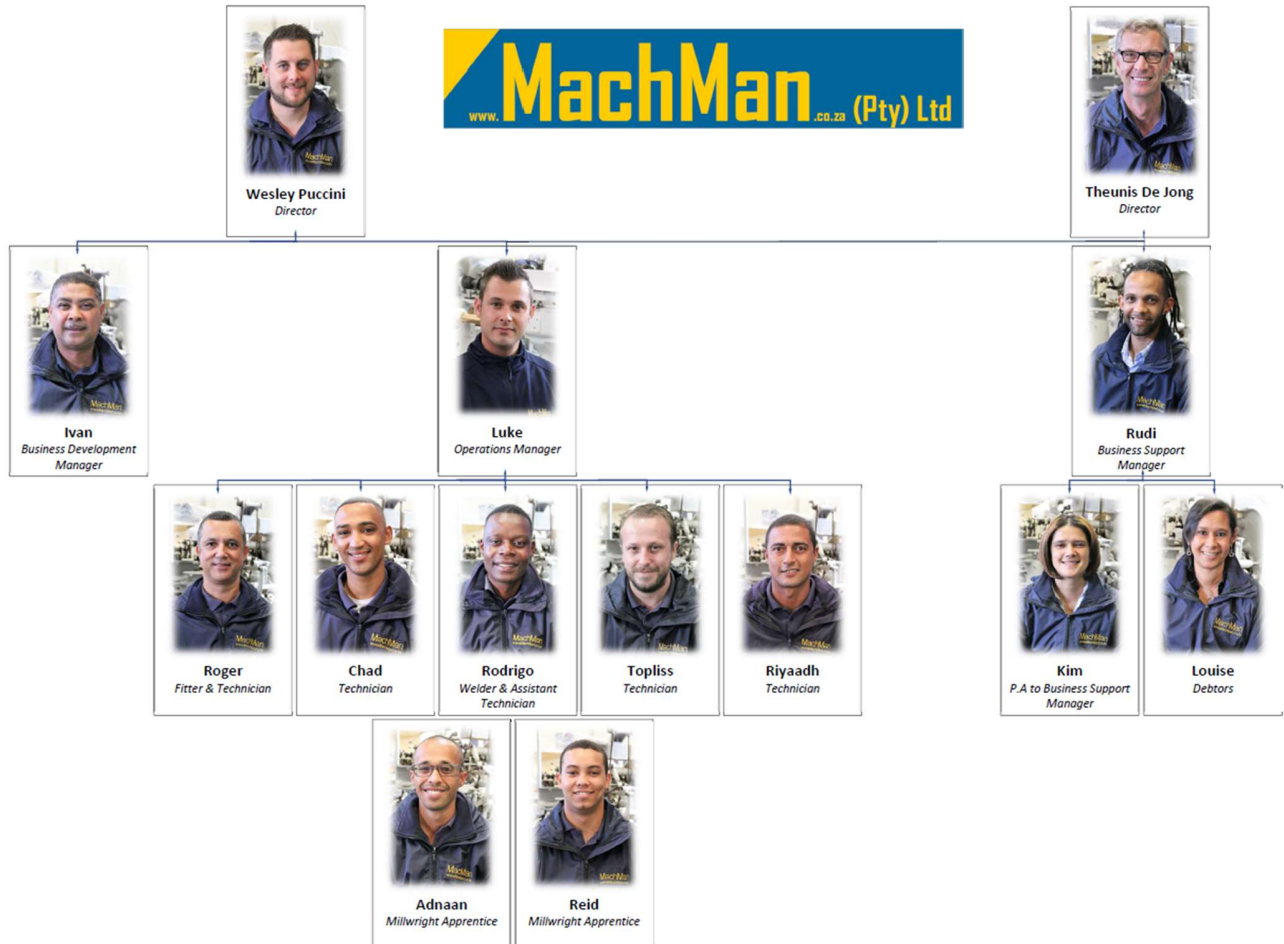
Senior Team members:

Ivan Michaels – Business Development Manager

Luke Serafin – Operations Manager

Rudi Solomons – Business Support Manager

7. Organisation Chart



Your Solution to Engineering in the Food Industry